



**COMPOSITE  
GENPAD®**

**GENPAD®**



**GENPAD® LC**

# GENPAD®

The GENPAD concrete generator pads are the answer for contractors who need a professional looking pad that will provide a lifetime base for their generator installations.

Each GENPAD is made from a composite of high strength fibers and cement and is warranted for life. These pads provide a sturdy, permanent base for the generator that won't shift or degrade over time. Give your customers even more peace of mind with their generator purchase when you add the reliable GENPAD.



## Features & Benefits:

- Lightweight concrete pad (half the weight of concrete)
- Smooth, consistent appearance looks great under the Generac unit
- Extremely impact and breakage resistant
- Fiber reinforced concrete that is further reinforced with rebar
- Flat bottom to facilitate easy leveling of the pad and generator
- Virtually eliminates sinking of the unit into the ground
- Fast and easy to install
- Offered in 3" and 4" heights (4" pad is hurricane rated)

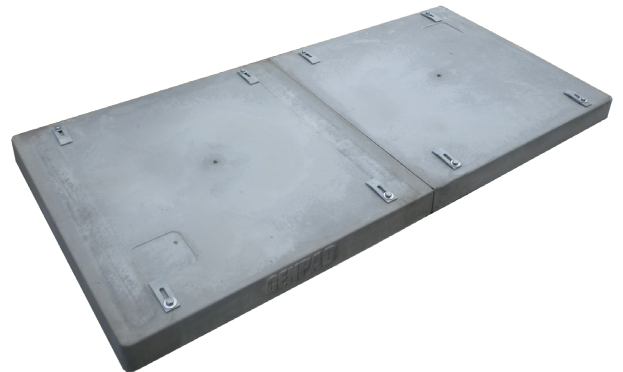


# GENPAD<sup>®</sup> LC

## The LIQUID-COOLED Generator Pad Solution

### Features & Benefits:

- GENPAD LC's unique Fiber Reinforced Concrete delivers superior compression strength
- GENPAD LC is stronger and weighs 50% less than concrete
- Easy Placement. Our 5/8" lifting insert accommodates an eye-bolt and sling to mechanically place the GENPAD LC
- Easy Alignment. The GENPAD LC Pads has indentations to ensure perfect pad alignment
- Easy Positioning. Edge to edge positioning is made simple with the GENPAD LC guides. These visual markings eliminate the guesswork of proper positioning
- Knockouts are designed for conduit feed directly into the generator base. Tapping the section out provides full access
- GENPAD LC's unique clip mounting system provides the most flexibility and 8-point connections
- One Pallet – Everything included. Each GENPAD LC kit is shipped on its own pallet with mounting hardware included



# COMPOSITE GENPAD®

The new Composite GENPAD is the lightweight pad option for the fastest and easiest installation. Easily handled by one person, the composite pad material is durable and strong and simplifies and speeds installation

## Strong and Lightweight

- 33 lbs total pad weight
- Easy to handle and install with just one person
- Increased load capacity vs regular GENPAD

## Advanced Composite Material

- Industrial high strength fiberglass reinforced thermoset sheet molding compound
- Specifically designed to distribute generator weight over entire pad surface
- Certified to UV resistant standard UL746C – resists fading
- Flammability rated UL94-5V and NFPA 37

## Professional Look & Feel

- Textured top surface and gray color for natural looking base
- Mounting bolt score marks for quick unit alignment and fast installation
- Includes hardware for mounting

## Lower Cost Shipping

- Single pads ship parcel
- Reduces stack height by 33%
- 5 pads only 11" tall
- Nestable design saves space and adds stability during transport
- Pads lock in place during transit



# GENPAD®

## GENERAC® STANDBY GENERATORS

### Composite GENPAD® 3" for Air-Cooled Units

GENERAC ITEM #	CATALOG NO.	DESCRIPTION	WEIGHT PER PAD (LB)
A0003322319	CG3154-3GY	54" x 31" x 3"	33

### Concrete GENPAD® 3" for Air-Cooled Units

GENERAC ITEM #	CATALOG NO.	DESCRIPTION	WEIGHT PER PAD (LB)
10000007852	FG5431-3GY	54" x 31" x 3"	200

### Concrete GENPAD® 4" for Air-Cooled Units

GENERAC ITEM #	CATALOG NO.	DESCRIPTION	WEIGHT PER PAD (LB)
10000007848	FG5431-4GY	54" x 31" x 4"	275

### GENPAD® LC for Liquid-Cooled Units

GENERAC ITEM #	CATALOG NO.	DESCRIPTION	WEIGHT PER PAD (LB)
A0000516140	FG9041-4G	90" x 41" x 4"	260
10000005771	FG8341-4G	83" x 41" x 4"	240
10000044173	FG7037-4G	70" x 37" x 4"	185

## KOHLER® STANDBY GENERATORS

### Concrete Generator Pad 3" for Air-Cooled Units

KOHLER ITEM #	CATALOG NO.	DESCRIPTION	WEIGHT PER PAD (LB)
GM92228-KP1-QS	FG3437-3K	34" x 37" x 3"	150
GM104820-KP1-QS	FG3253-3K	32" x 53" x 3"	200

### Concrete Generator Pad 4" for Air-Cooled Units

KOHLER ITEM #	CATALOG NO.	DESCRIPTION	WEIGHT PER PAD (LB)
GM92228-KP2-QS	FG3437-4K	34" x 37" x 4"	200
GM104820-KP2-QS	FG3253-4K	32" x 53" x 4"	275

Generac® is a registered trademark of Generac Corporation.  
Kohler® is a registered trademark of Kohler Corporation.



DiversiTech Corporation  
Duluth, GA 30097

Customer Service  
800.995.2222  
customerservice@diversitech.com

©2025 DiversiTech Corporation  
0825